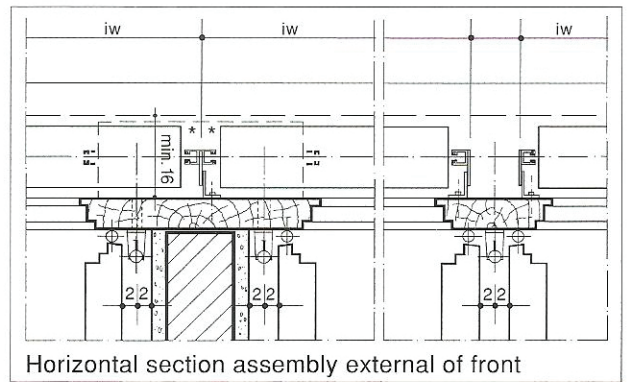
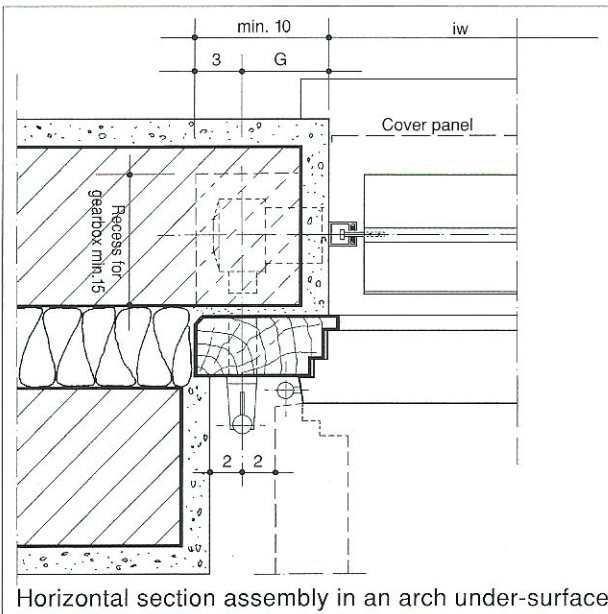
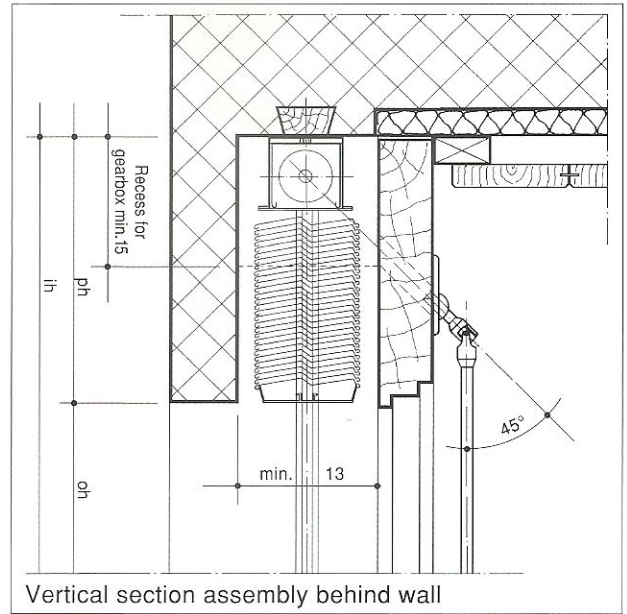
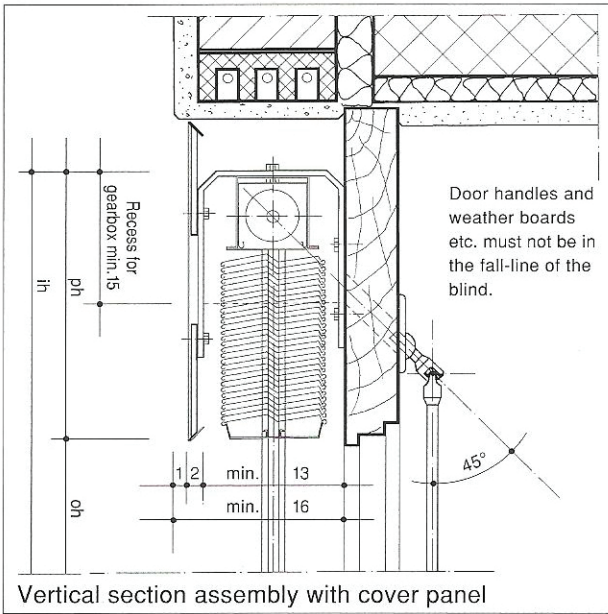


AV-90 and AV-910 External Alu Venetian Blinds



ih = installation height
 oh = opening height
 ph = pack height (with cover panel + 2 cm)
 iw = installation width

Drawing dimensions in cm

Pack height

Opening height	min. pack
151 – 175 cm	22 cm
176 – 200 cm	23 cm
201 – 225 cm	25 cm
226 – 250 cm	26 cm
251 – 275 cm	28 cm
276 – 300 cm	29 cm
301 – 325 cm	31 cm
326 – 350 cm	32 cm
351 – 375 cm	34 cm
276 – 400 cm	35 cm
with cover panel + 2 cm	
(smaller pack height available on request)	

Installation width

min. 40 cm	with crank handle drive
min. 60 cm	with electric motor or gearbox within slat area
max. 400 cm	(Exception: reduce for highly exposed buildings, high buildings)

Installation height

min. 50 cm
max. 400 cm

Installation area

max. 8.0 m ²	single blinds
max. 8.0 m ²	coupled blinds with crank handle drive
max. 24.0 m ²	coupled blinds with electric drive

Coupled blinds

Crank handle drive:
 max. 4 blinds coupled, each 2 left, 2 right.
 Electric motor drive:
 max. 5 blinds coupled, provided the drive is in the middle, each 2 left, 2 right

Electric drive

220 V/50 Hz with bi-metal protection switch and built-in limit switches as well as upper running safety switch, built in to the head rail.

In each case only one motor can be connected to any one switch. Several motors on one switch have to be coupled via electrical control (ask for the Control Diagram).